



GARGOYLE BRIDGE

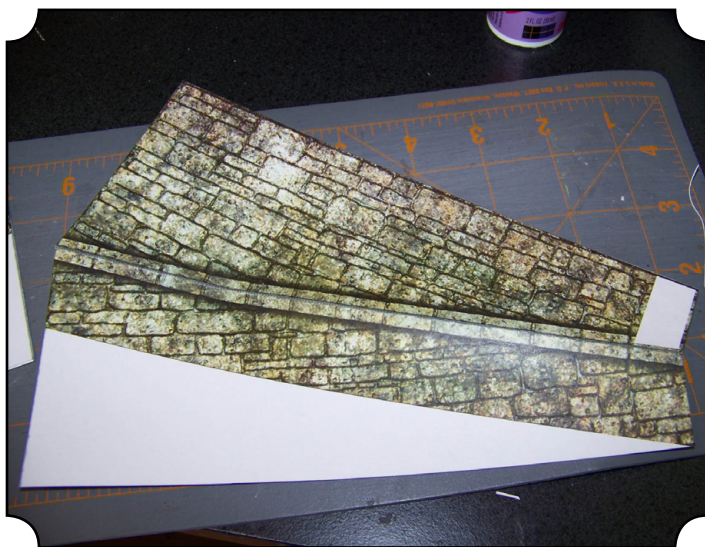
Both fighter miniatures are by REAPER MINIATURES (www.reapermini.com)

F A T D R A G O N G A M E S
www.fatdragongames.com

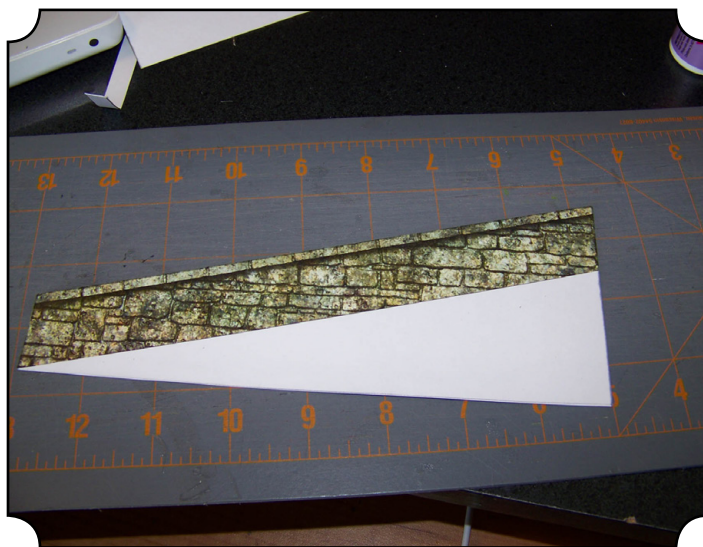


Note: Before proceeding with these instructions, please read the beginners guide PDF document included with this model which includes a complete list of necessary materials to construct this model. We recommend that you browse all the way through this set of instructions before beginning. Customers with CRAFTROBO and SILHOUETTE SD autocutters can download free GSD cut files for this set at the FDG website once they are available.

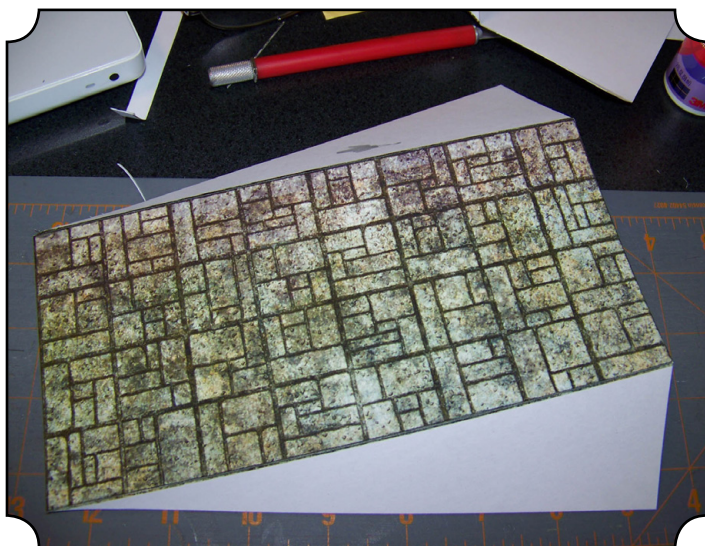
END SECTION



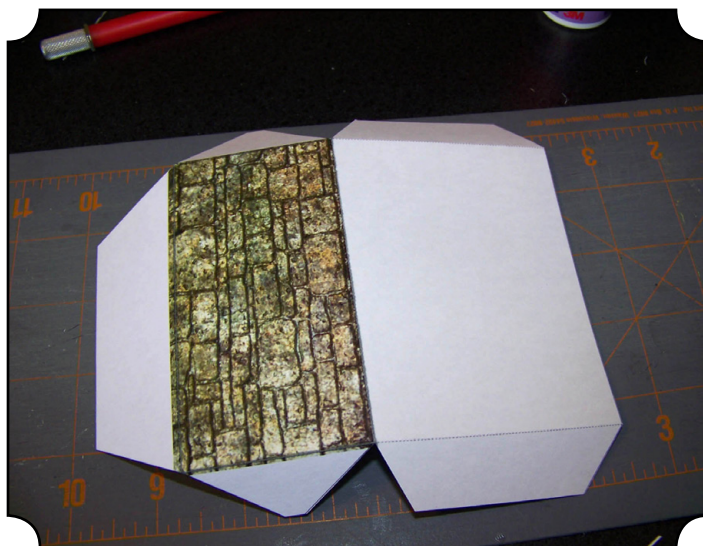
1: Cut and test fold the side wall pieces as shown.



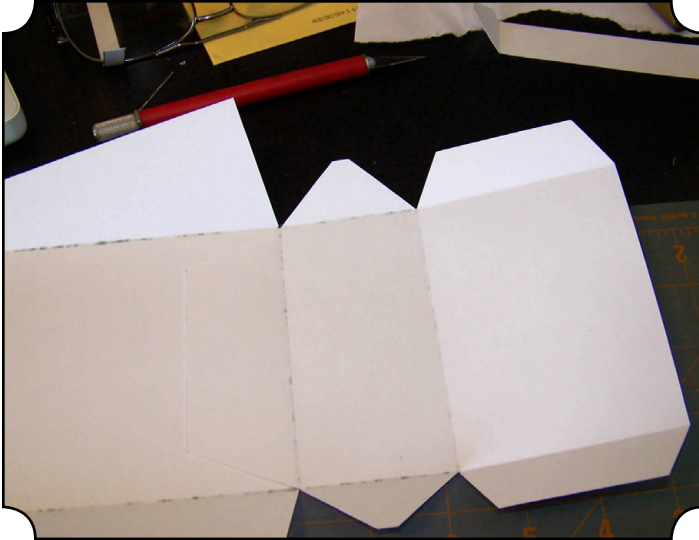
2: Glue the side wall pieces in half and allow to fully dry. You may want to put them under something heavy to ensure they dry flat.



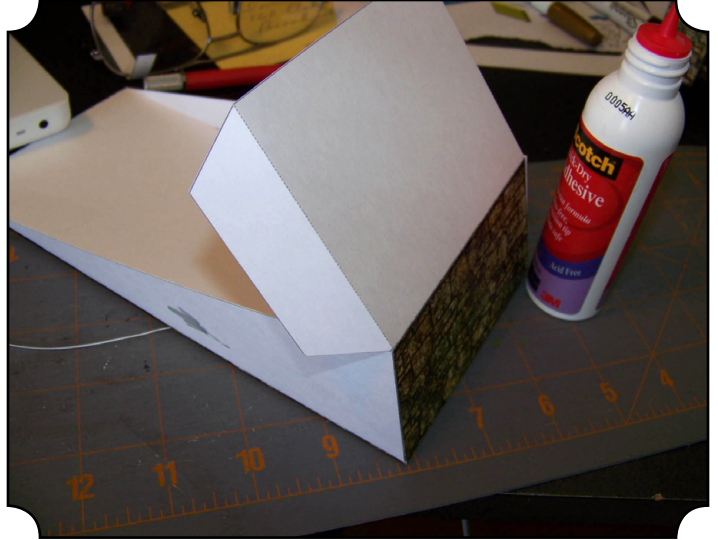
3: Cut out the center piece as depicted above.



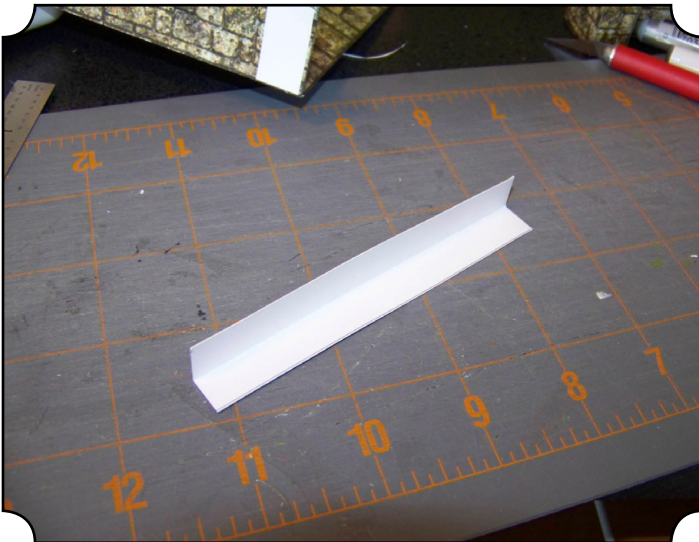
4: Cut, score and test fold the end piece.



5: Glue the end piece to the center section as shown above.



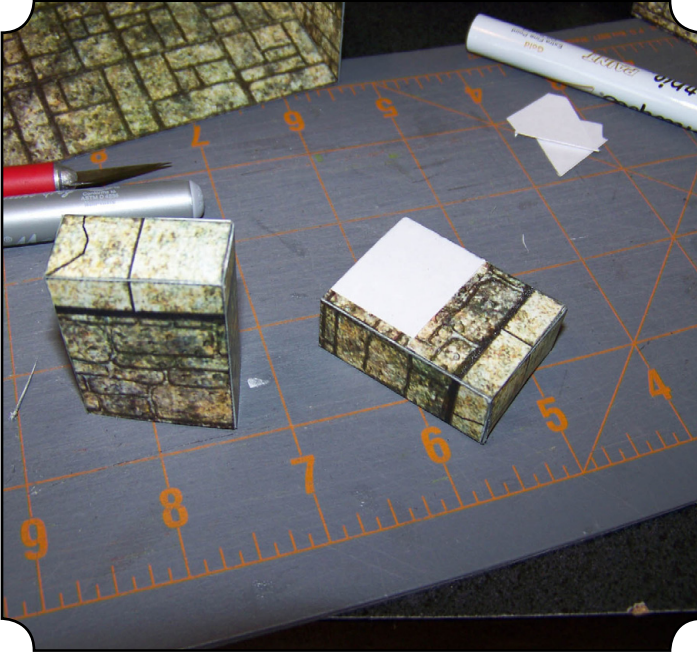
6: Glue the side tabs.



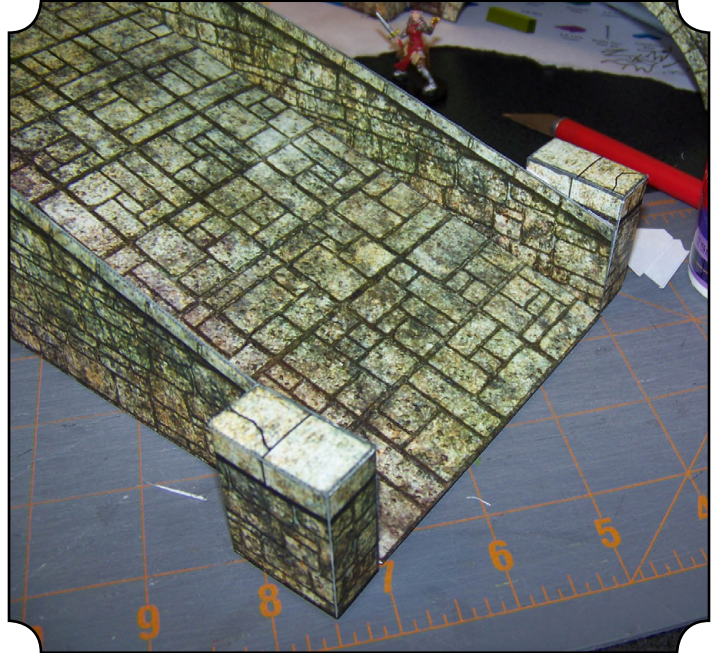
7: Cut and score the reinforcement brace.



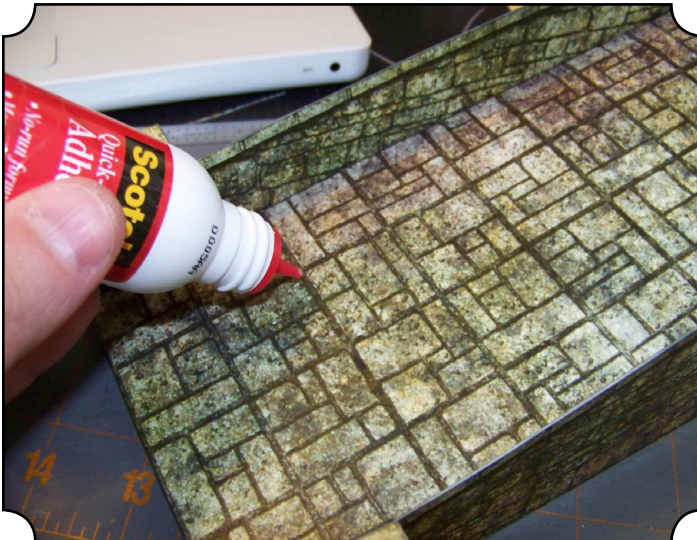
8: Finish by gluing the bottom flap into place and gluing the reinforcement brace about halfway up the center section (doesn't need to be precise.)



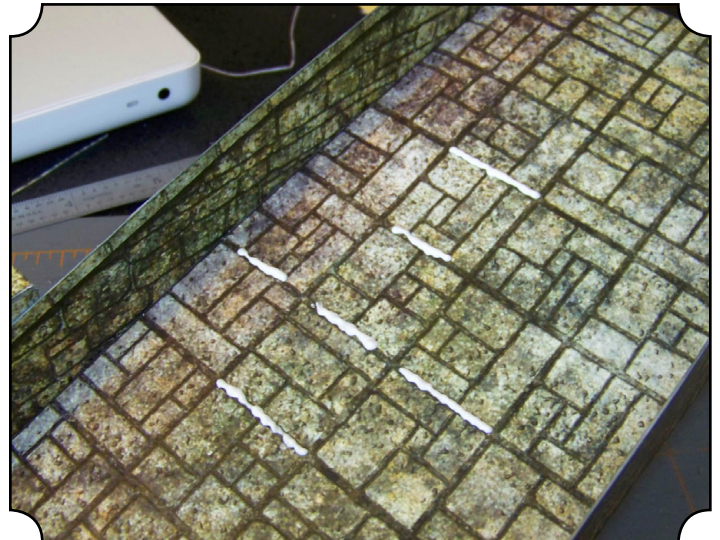
9: Cut, score and glue the end supports as shown.



10: Glue the side walls and end supports to the center section.



11: To keep your figures from sliding down the ramp we recommend applying a line of white paper glue along each horizontal grid line. The glue will dry clear and be virtually invisible.



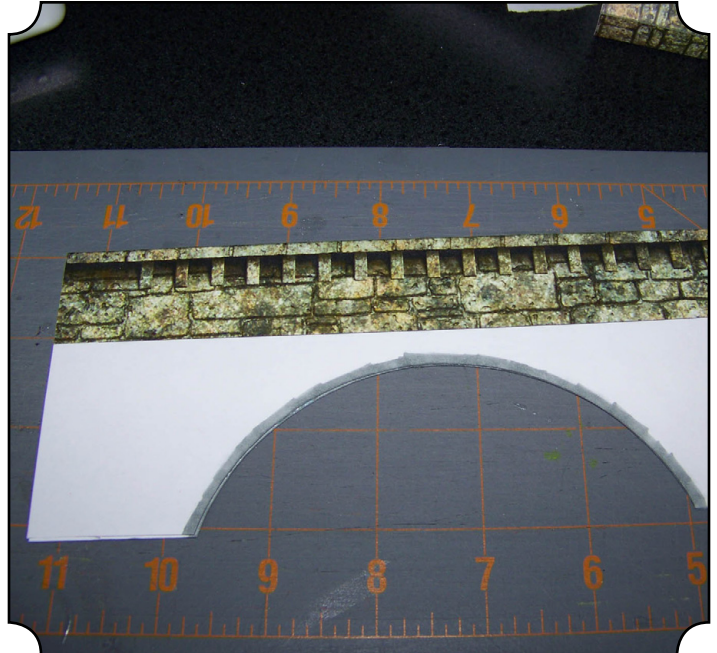
12: Here is what it looks like with fresh glue applied to several points on the ramp.



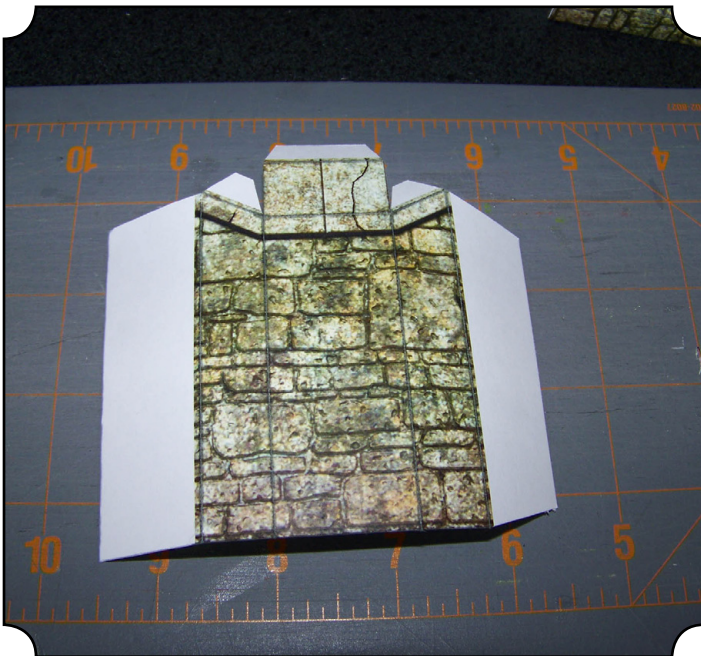
CENTER SECTION



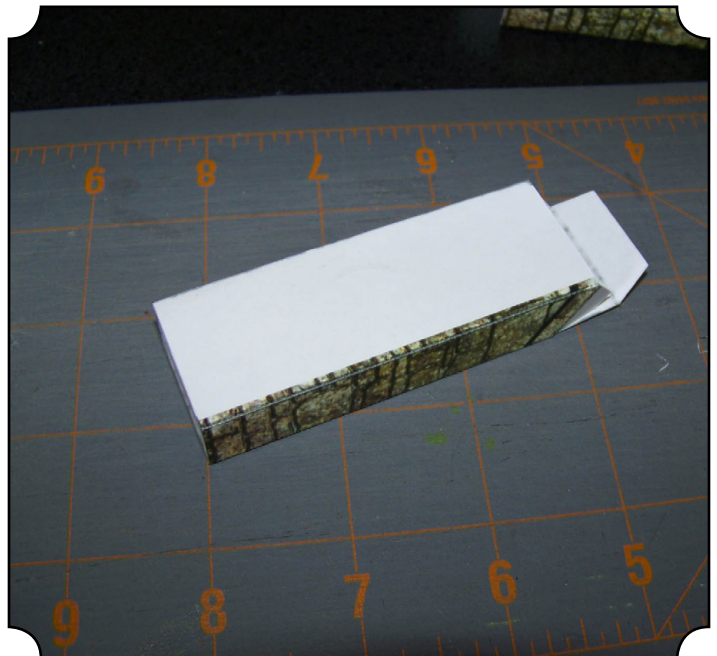
1: Cut, score and test fold the main side wall pieces.



2: Fold and glue in half. Note that we have colored the edge of the opening gray. This will help hide any variations in cuts between the sections when layered together.



3: Cut, score and test fold the vertical pillars.



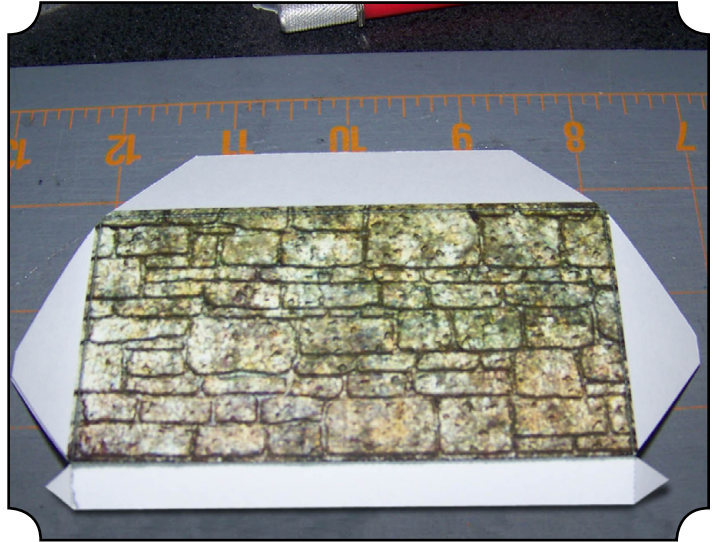
4: Glue the main tab first.



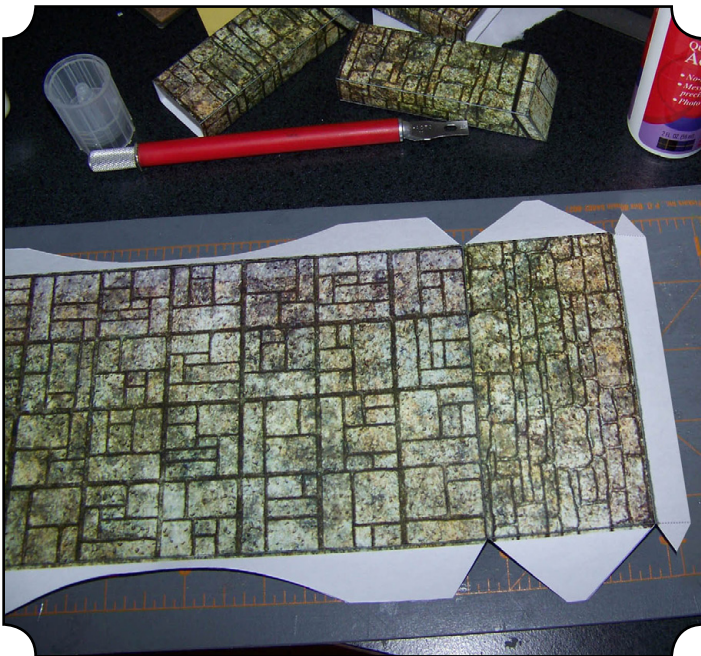
WATER WHEEL



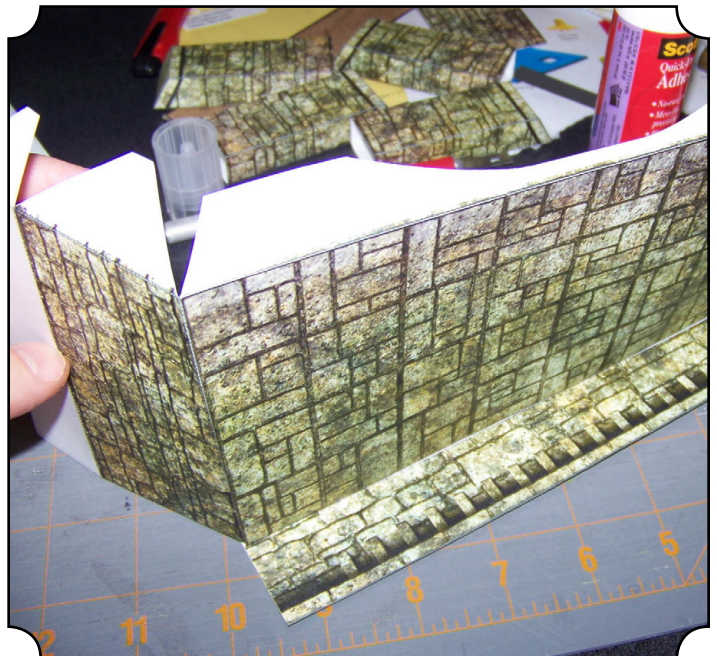
5: Finish by gluing the top flap.



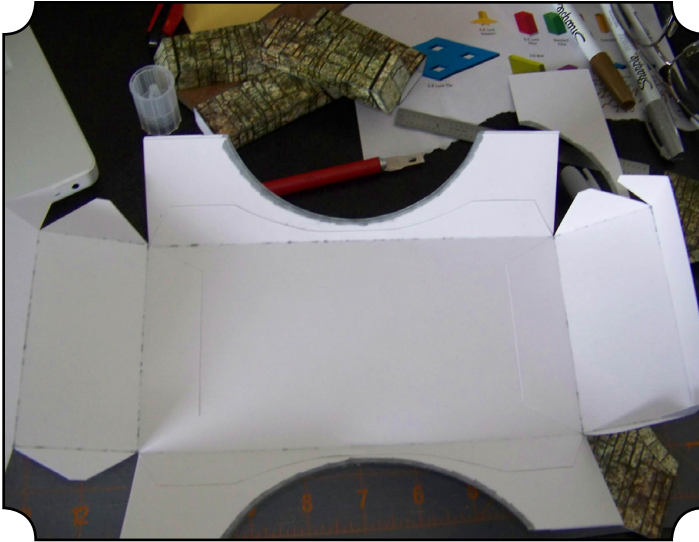
6: Cut, score and text fold the end sections.



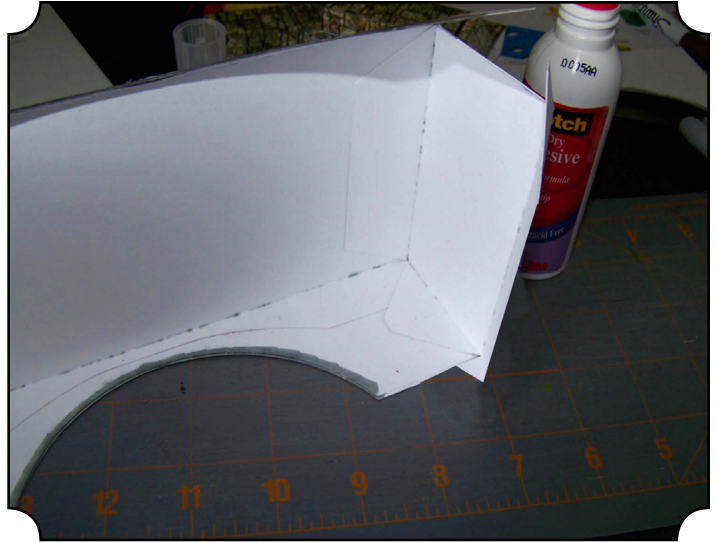
7: Glue the end sections to the center section as shown above.



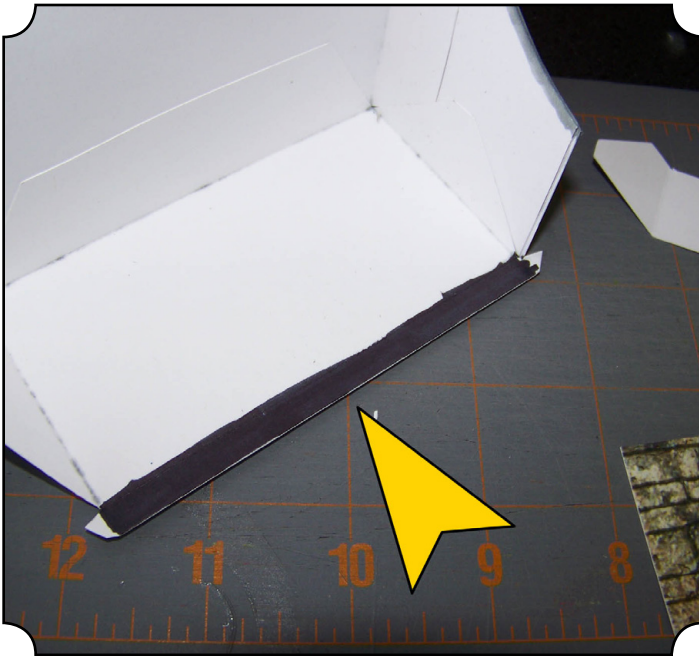
8: Glue the main side walls to the center section now, making sure you properly align them along the IN-SIDE face of the side wall (see above.)



9: The is what it should look like with all four walls glued to the center section.



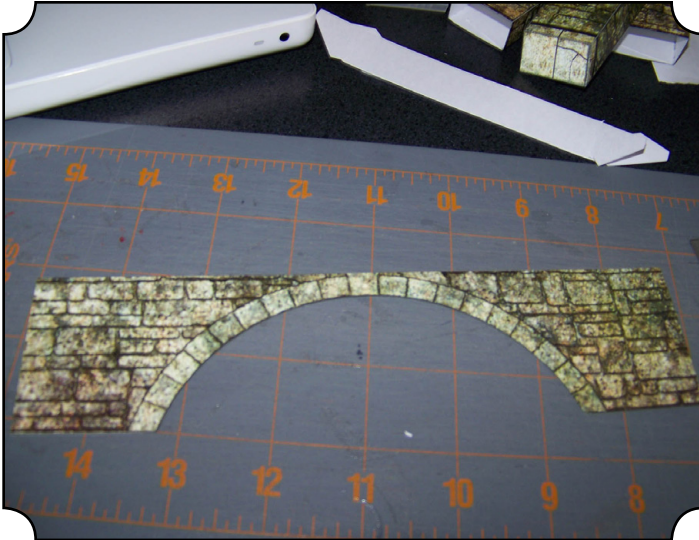
10: Glue side wall tabs to their adjacent wall pieces.



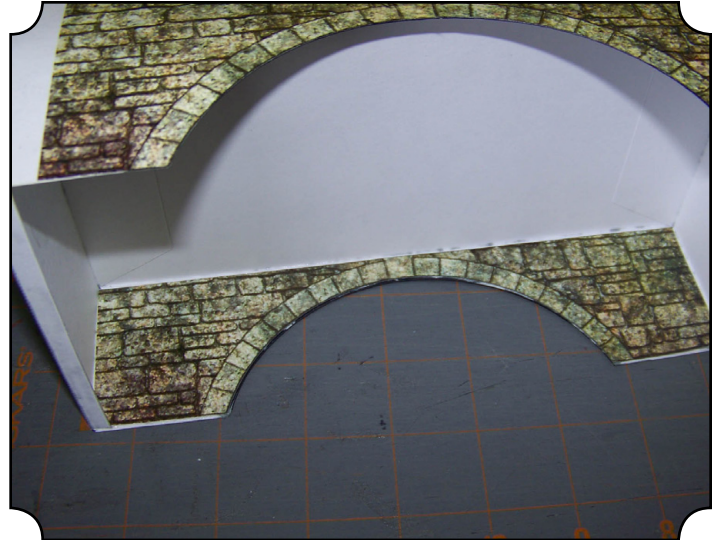
11: Color the upper face of the small bottom flap on the ends black (it will show in the finished model.)



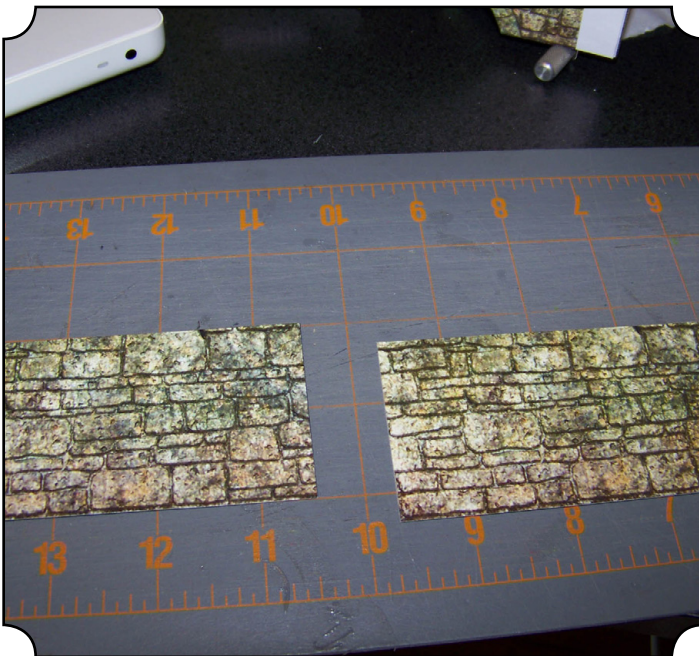
12: Fold and glue the small flap you just colored and glue into place.



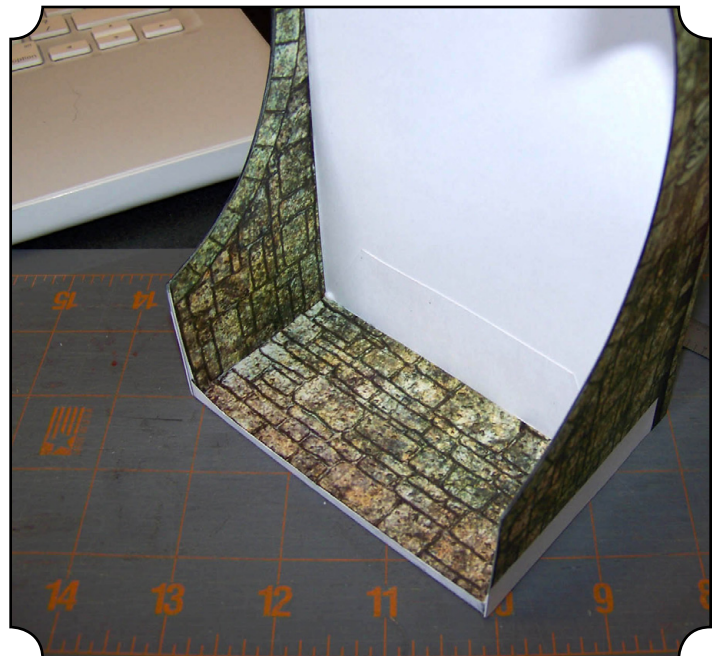
13: Cut out the interior wall face.



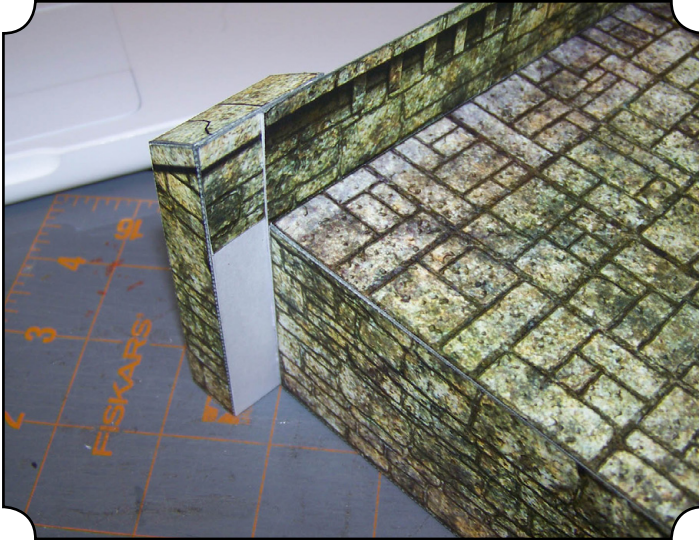
14: Glue to the inside of the completed center section as shown above.



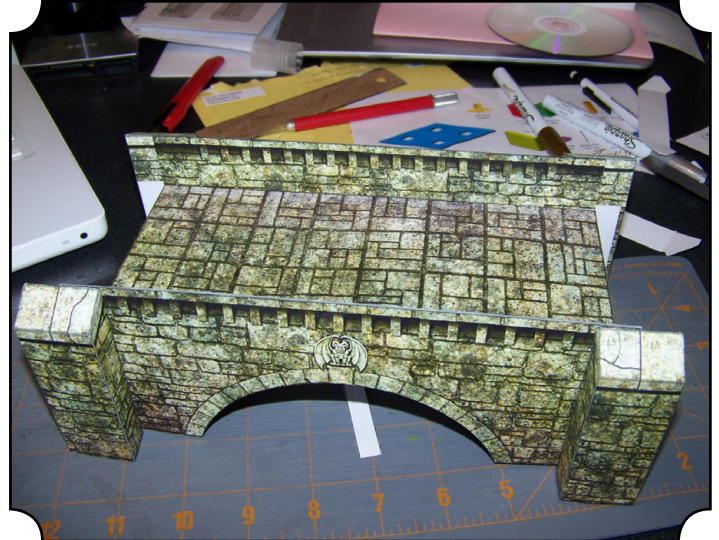
15: Cut out the interior end wall pieces.



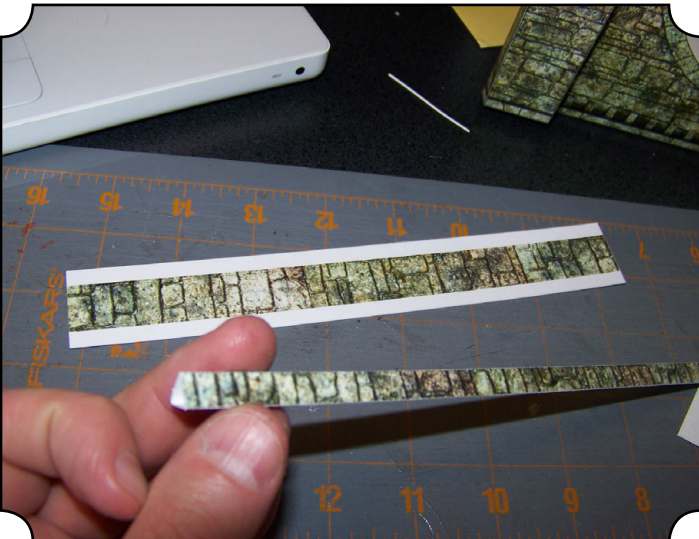
16: Glue into place.



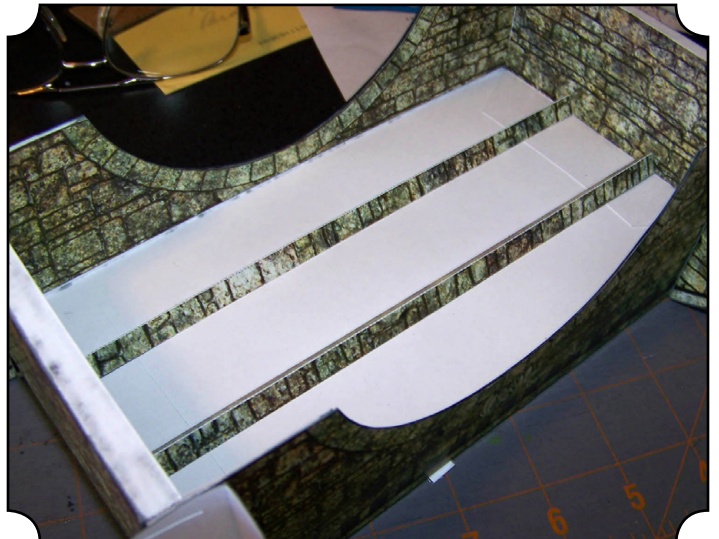
17: Glue the vertical pillars to the ends of the center section, making sure half of them extend past the end of the wall (see above.)



18: Here is the center section with all four pillars in place. Each additional center section you build will only require pillars AT ONE END (the end without pillars will go against this section that already has pillars.)



19: Cut, score and glue the support beams into a triangular cross section.



20: Glue to the bottom of the center section as shown above.



All images ©2012 Fat Dragon Games. www.fatdragongames.com
Dragonshire is a trademark of Fat Dragon Games. All rights reserved.